



Instruction Manual Drinking Water Filter Kit

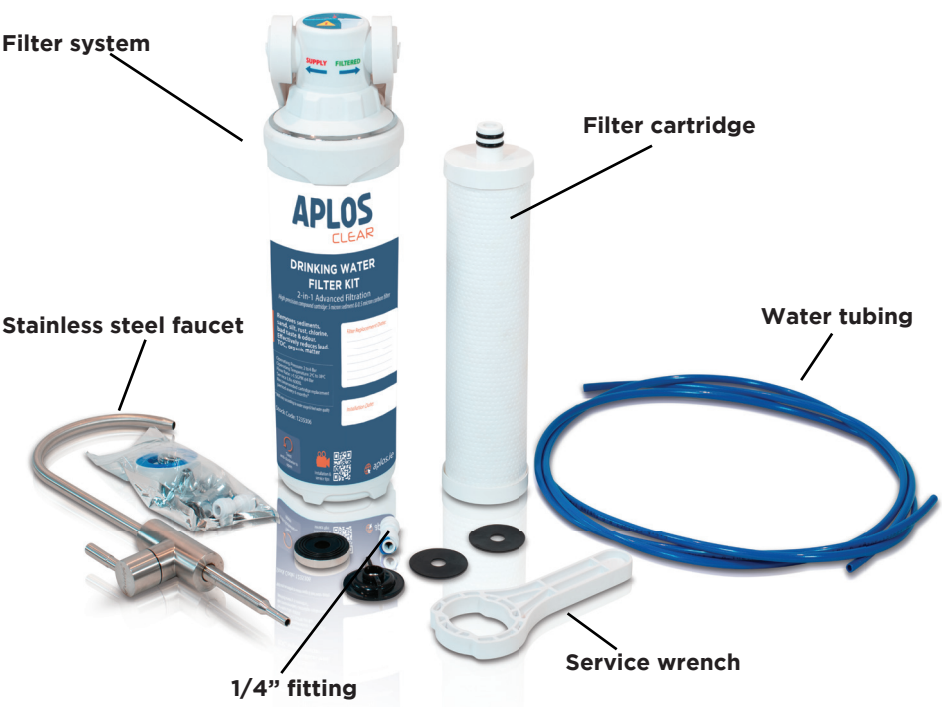


Manufactured for EPS Group
aplos.ie

Introduction

APLOS Clear is a space-saving do-it-yourself (DIY) solution for enhancing the quality of your drinking water under the sink. It incorporates a 2-in-1 compound filter consisting of a 0.5 micron carbon block and a 5 micron sediment cotton cartridge.

This filter efficiently removes sediments, sand, silt, rust, chlorine, unpleasant taste, and odour, while also effectively reducing lead, total organic carbon (TOC) and organic matter from tap water.



What you need to know

- The filter has a capacity of 6000 litres, and replacement is recommended every 6 months. However, this duration may vary depending on the quality of the inlet water and usage.
- Regular cartridge replacement is essential to maintaining high-quality water filtration.
- If the filter is idle for more than 2 weeks, clean the filter inside and replace the cartridge.
- After installing the filter or replacing the cartridge, run water from the tap for 5 minutes.
- This system is designed for use with cold water supply only.
- Do not use the system with water that is microbiologically unsafe or of unknown quality without adequate disinfection.
- Do not use this system on water containing hardness greater than 50 mg/L without pretreatment to remove hardness.
- During the installation of this product, ensure that children under 3 years of age do not have access to small parts.

Cutting the tube

Cut the 1/4" tube into two sections in proper length. Make sure to cut them evenly.

Cut tubing



Insert tubing

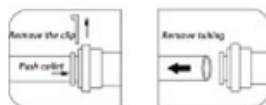


How to connect/remove the tubing

To remove tubing, pull out the blue clip, push down the collet and pull out the tubing.

To connect the tubing, pull out the blue clip, push in the water tube and lock the blue clip.

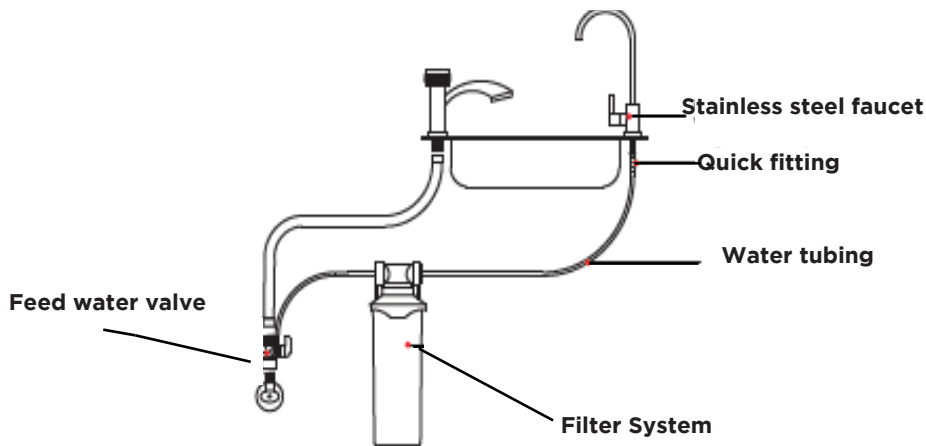
Remove tubing



Technical Data

1	Working pressure range: 2 - 6 bar
2	Capacity: 6000L
3	Water flow rate: 1.5GPM @ 4 bars
4	Max. temperature: 38°C
5	Min. temperature: 4°c

Installing the Filter System



Step 1: Connect the 3 way feed water



Pass the tubing through the nut



Push and squeeze the tubing to the very end



Use a wrench to tighten

Step 2: Connect the water supply



Install with the cold water supply



Shut off the water supply



Remove the flexible hose



Attach the adapter and ensure the rubber O-ring is correctly positioned



Connect the flexible hose



Valve installation complete

Step 3: Connect the water supply

Remove the small blue clip on the "SUPPLY" end and connect the 1/4" blue tube, make sure the tubing hits the bottom of the fitting.

Lock the blue clip and connect the **filtered** end with more blue tubing the same way.



Step 4: Install the faucet

Mount the faucet to your sink top.

Connect the faucet with the 1/4" quick fitting.

Connect the other end of 1/4" blue tube from the "FILTERED" tap into the 1/4" fitting.

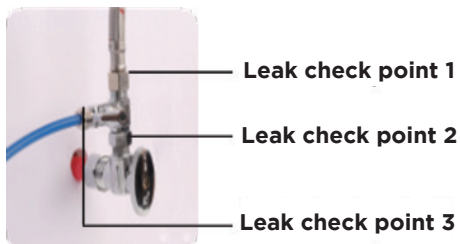


Step 5: Check for leaks and flush the filter

Turn on the water supply and check if there are any leaks around the connections.

Use plumber's tape on the threaded fittings if needed.

Flush filter for 5 minutes before using filtered water.



Turn off the tap for 5 minutes and check for any leaks or drips at the in and out ports of the filter housing.

If you notice any dripping, make sure that tubes are inserted to the limit of the push-fit connection.

Filter Cartridge Replacement

STEP 1: Twist the housing anti-clockwise.

STEP 2: Using wrench to unscrew the housing body.

STEP 3: Take out the old cartridge and load with the new one, then install back in the same way.

Note

Always keep the wrench provided for future service.

Replacement filter code

1235308



APLOS
CLEAR