



mounting systems



2-Post Steel ProLine

Application	Ground-mount
PV-Modules	Framed
Module arrangement	Up to 55 m per rack unit
System inclination	20° or 25°
Minimum module elevation to the ground	70 – 80 cm
Foundation	Cap profile (ramming post), Foot plates with fix anchors, Concrete In-Cast
Max. ground inclination	Up to 10° in east-west direction
Frame profiles	Steel (S 355/S 350 GD)
Small parts	Steel galvanized, stainless steel, geomet-coated steel, extruded aluminum (EN AW 6063 T66)
Warranty	10 years



Ground-mount



Framed modules



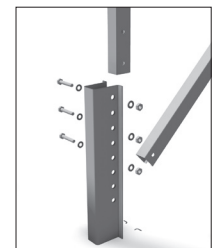
Portrait orientation



Landscape orientation



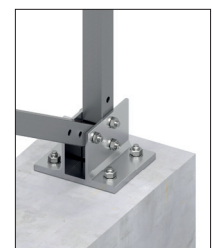
Support - rafter

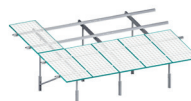
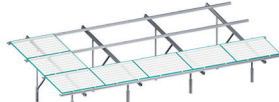



Cap profile



Foot plates with fix anchors



Configuration	Dimensions (H x W)	Clamping
2 portrait	2746 mm x unlimited	
3 landscape	unlimited x up to 1350 mm	
4 landscape	unlimited x 1013 mm	



Module support



For further information: www.mounting-systems.com
Subject to technical changes.
2023 © Mounting Systems GmbH